

APPROVED BY/DATE
C. Westcott 5-26-92

SAFETY ORGANIZATION(S):

THIS FILTER HAS BEEN FORMALLY RECOGNIZED, CERTIFIED OR APPROVED BY THE LISTED AGENCY. THEREFORE, ALL TEST/REQUIREMENTS SPECIFIED IN THE LATEST REVISION OF THE FOLLOWING AGENCY STANDARDS HAVE BEEN MET:

- UL RECOGNIZED
- UL 1283
- CSA CERTIFIED
- CSA 22.2, NO. 0, 0.4, 8
- VDE APPROVED (PENDING)
- VDE 565-3

OPERATING SPECIFICATIONS:

- LINE VOLTAGE/CURRENT:
- 6 AMP., 120/250 VAC
- 5 AMP./40°C, 250 VAC
- 50-60Hz

LINE FREQUENCY:

- MAX. LEAKAGE CURRENT, EACH LINE TO GROUND
- .25 mA @ 120V 60 Hz
- .48 mA @ 250V 50 Hz

OPERATING AMBIENT TEMP. RANGE:

- 10°C TO +40°C @ RATED CURRENT, I_r
- IN AN AMBIENT, I₀, HIGHER THAN 40°C, THE MAXIMUM OPERATING CURRENT, I₀, IS AS FOLLOWS:

$$I_0 = I_r \sqrt{\frac{95 - T_0}{45}}$$

RELIABILITY SPECIFICATIONS:

- STORAGE TEMPERATURE:
- 40°C TO +85°C
- HUMIDITY:
- 21 DAYS @ 40°C 95% RH
- CURRENT OVERLOAD TEST:
- 6 TIMES RATED CURRENT FOR 8 SECONDS

TEST SPECIFICATIONS:

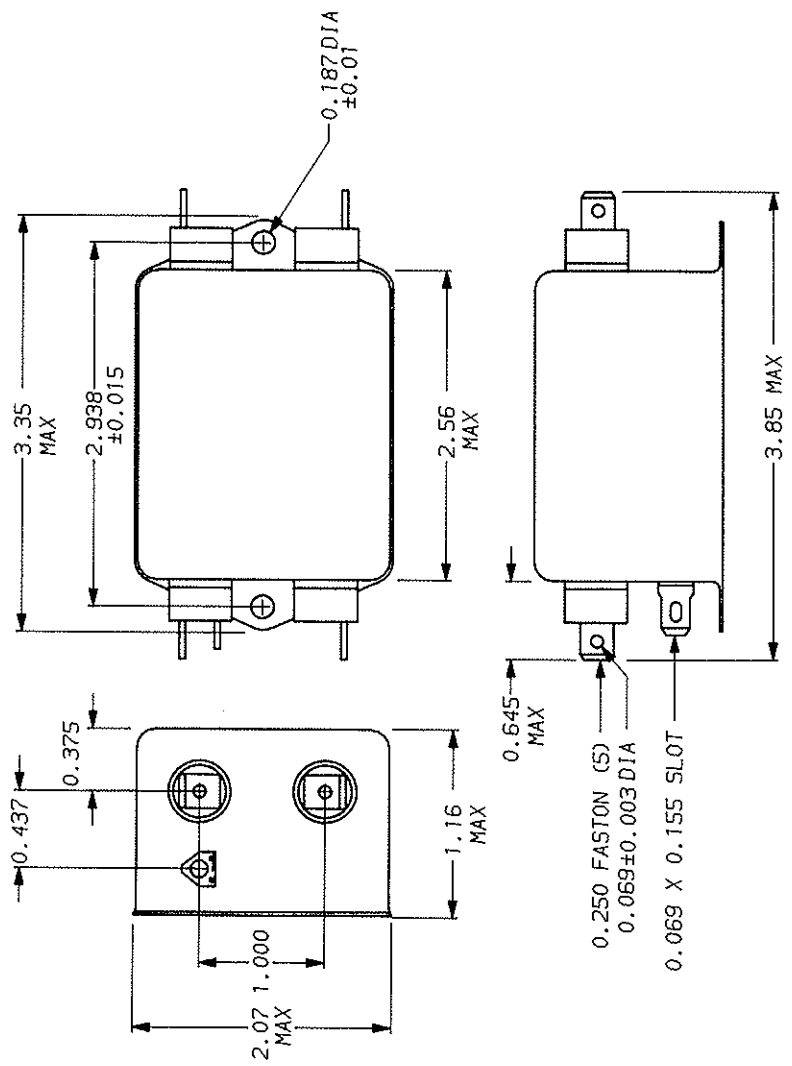
- INDUCTANCE:
- .516 mH NOMINAL
- CAPACITANCE, (MEASURED @ 1 KHz, 0.25 VAC MAX., 25°C ±1°C)
- LINE TO GROUND:
- .003µF ±20%
- LINE TO LINE:
- 1.08µF ±20%
- DISCHARGE RESISTOR
- 330KΩ
- LINE/GROUND AND LINE/LINE
- INSULATION RESISTANCE
- 6000 MΩ (MIN) AT 100 VDC
- 20°C AND 50% RH

RECOMMENDED RECEIVING INSPECTION HIPOT:

- LINES TO GROUND:
- 2250 VDC FOR 1 MINUTE
- LINE TO LINE:
- 1450 VDC FOR 1 MINUTE

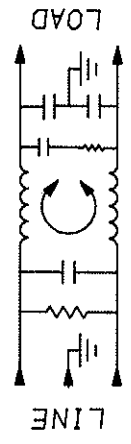
FILTER APPROVAL:

THE BEST WAY TO SELECT AND QUALIFY A FILTER IS FOR YOUR ENGINEERING TO TEST THE UNIT IN YOUR EQUIPMENT.



FREQUENCY MHz	50Ω - 50Ω (MINIMUM) INSERTION LOSS					
	15	5	10	20	30	
COMMON	10	19	27	32	40	46
DIFF.	20	49	60	65	61	61

This document is proprietary to CORCOM INC. and is not to be reproduced nor used for manufacturing purposes except on CORCOM's order or prior written consent.



DECIMAL:	.XXX	.XX	.X	ANGLES	± 1°
ENGLISH:	±.025				
METRIC:	±				
TOLERANCE EXCEPT AS NOTED					
MATERIAL:	AS SUPPLIED				
FINISH:	AS SUPPLIED				

CORCOM

 LIBERTYVILLE, IL 60048

POWER LINE FILTER

SCALE	DATE	DRG. NO.
NTS	11-5-90	6EDK1.01
ORNL. BY	ORIGINATOR	CFW
CFW	CFW	